

# NPT COMPACT ZINC-PLATED STEEL FITTINGS

## LFMC SEALTITE® COMPACT FITTINGS NPT ZINC-PLATED STEEL FITTINGS



### DESCRIPTION

- Fitting is ideal for use with standard liquid tight conduit to allow easy installation. IP 66/67 Rated when installed with approved conduit
- Approved for both exposed and concealed locations

### SPECIFICATIONS

- Zinc plated steel fitting consists of a gland nut, sealing ring, high tensile grounding ferrule, body, seal, lock nut and insulated throat
- Color: Metallic
- Temp. range: -49° F to +221° F (-45° C to +105° C)
- UL Approved UL 514B TEOZ.E472179, complies with NEMA standard FB-1

### APPLICATIONS

- Corrosion resistant, protects from moisture and oils
- Suitable for hazardous locations per NEC Articles
  - 501 Class I Div. 2
  - 502 Class II Div. 1 & 2
  - 503 Class III Div. 1 & 2

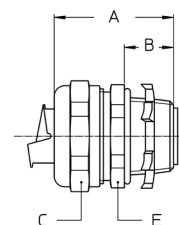


See: [www.ul.com](http://www.ul.com) [www.nfpa.org](http://www.nfpa.org)  
[www.naed.org](http://www.naed.org) [www.nema.org](http://www.nema.org)



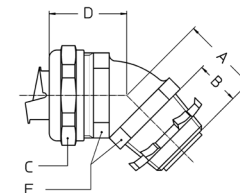
### STRAIGHT

Trade Size	Item ID	Min. Int. Bore (mm)	Dimensions (inches)				KO Size NPT	Weight (lbs/100)	Std. Pkg.
			A	B	C	E			
3/8"	7140122GSIT	11.0	1.259	0.472	1.023	0.944	1/2"	10.8	10
1/2"	7140162GSIT	14.5	1.388	0.472	1.141	1.063	1/2"	12.1	10
3/4"	7140202GSIT	19.4	1.378	0.472	1.378	1.299	3/4"	17.2	10
1"	7140262GSIT	24.7	1.456	0.511	1.771	1.732	1"	30.6	5
1-1/4"	7140352GSIT	33.3	1.653	0.590	2.086	2.047	1-1/4"	41.0	4
1-1/2"	7140402GSIT	38.0	1.889	0.630	2.440	2.362	1-1/2"	61.7	2
2"	7140502GSIT	49.0	2.126	0.748	2.992	2.834	2"	97.0	2



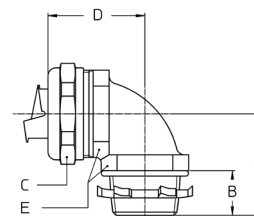
### 45 DEGREE

Trade Size	Item ID	Min. Int. Bore (mm)	Dimensions (inches)					KO Size NPT	Weight (lbs/100)	Std. Pkg.
			A	B	C	D	E			
3/8"	7144122GSIT	11.0	0.945	0.551	1.114	1.102	0.944	1/2"	19.2	10
1/2"	7144162GSIT	14.5	0.984	0.551	1.244	1.181	1.063	1/2"	22.3	10
3/4"	7144202GSIT	19.4	1.063	0.551	1.504	1.299	1.299	3/4"	36.8	4
1"	7144262GSIT	24.7	1.260	0.630	1.949	1.496	1.653	1"	65.3	5
1-1/4"	7144352GSIT	33.3	1.417	0.630	2.086	1.535	2.047	1-1/4"	95.2	2
1-1/2"	7144402GSIT	38.0	1.535	0.709	2.441	1.811	2.362	1-1/2"	131.2	2
2"	7144502GSIT	49.0	1.732	0.787	2.992	2.087	2.834	2"	206.4	2



### 90 DEGREE

Trade Size	Item ID	Min. Int. Bore (mm)	Dimensions (inches)					KO Size NPT	Weight (lbs/100)	Std. Pkg.
			A	B	C	D	E			
3/8"	7149122GSIT	11.0	1.063	0.472	1.023	1.260	0.944	1/2"	19.2	10
1/2"	7149162GSIT	14.5	1.181	0.472	1.141	1.338	1.063	1/2"	22.3	10
3/4"	7149202GSIT	19.4	1.338	0.472	1.378	1.574	1.299	3/4"	36.8	4
1"	7149262GSIT	24.7	1.614	0.511	1.771	1.929	1.653	1"	65.3	5
1-1/4"	7149352GSIT	33.3	1.811	0.511	2.086	1.968	2.047	1-1/4"	95.2	2
1-1/2"	7149402GSIT	38.0	2.204	0.511	2.441	2.244	2.362	1-1/2"	131.2	2
2"	7149502GSIT	49.0	2.441	0.630	2.992	2.677	2.834	2"	206.4	2



IP 66/67 with approved conduit